

# NOVEMBER 2014 CONNECTION

## Hello Neighbours and Friends,

Before the Christmas Season is upon us, I wanted to provide you with the final update for 2014. It was a very busy year for us as we worked through two shut downs and held a milestone event with our employees and community to celebrate five years as Capital Power.

In August, the Alberta Utilities Commission (AUC) approved the Genesee Units 4 & 5 Project, however Environment and Sustainable Resource Development (ESRD) continues its review of the Application. The Project will not be considered approved until both regulators have issued decisions in favour of it.

The start of construction on the first unit is anticipated between 2015–2017, and the expected in-service date is between 2017–2020.

Also in August, Capital Power received the requested permits from the Alberta Energy Regulator (AER) to extend the Genesee coal mine to the south. ESRD is still reviewing the application with a decision expected this winter.

Genesee did experience a lost time incident on September 22nd with injury to one employee after contact with a support beam. This ended our long run of 467 days without a lost time injury but does demonstrate our ability to have extended periods of incident-free work activities. Read on to learn more about what we do to ensure preparedness for emergencies.

Lastly, we are continuing to work with Alberta Transportation on the installation of traffic lights at the intersection of Highways 627 and 770. This is expected



Sean Furey

to proceed in the winter of 2014/2015 and we will continue to provide updates to the community.

Best wishes to all of our neighbours for a happy and safe holiday season.

Sincerely,

A handwritten signature in blue ink, appearing to read 'Sean Furey', written over a white background.

**SEAN FUREY, Plant Manager**  
**Genesee Generating Station, Capital Power**

## GENESEEE STATION

BOX 20, SITE 2, RR #1  
WARBURG, ALBERTA T0C 2T0 CANADA

## Genesee Safety Exercises Keep Responders Ready to Handle the Real Thing



Employees practice aerial rescue techniques during an emergency response scenario. This photo was taken from the Genesee 3 stack.

The Genesee Generating Station may seem large from the outside, but in reality it is full of small, challenging spaces that require our employees to be nimble and alert. Even with the best precautions and practices in place, there is always room for “the human factor” – things like heat exhaustion, muscle fatigue and other medical issues. While the timing of such things can’t be predicted, it’s important – and possible – to be prepared for them.

Led by Emergency Planning Manager Levi Ellis and crew members from across the plant, Genesee employees practice a variety of rescue and emergency response scenarios throughout the year. This year, Levi and his staff conducted a Confined Space Rescue exercise in May, a tornado ‘shelter in place’ exercise in August and a plant evacuation exercise in September. In October, an emergency response exercise was conducted during the nightshift.

**“WE COMPLETE THESE EXERCISES TO ENSURE THAT WE CAN EFFECTIVELY RESPOND SHOULD ALL OTHER SAFETY PRECAUTIONS FAIL, AND THEY ALLOW US TO IDENTIFY SCENARIOS THAT NEED RESPONSE IMPROVEMENT,” SAYS LEVI. “IT’S ALSO A VALUABLE EXERCISE TO DEMONSTRATE TO EMPLOYEES THAT THEIR WORK CREWS HAVE COMPETENT AND SAFE FIRST-RESPONDERS SO IF ANYTHING WAS TO GO WRONG, IT WILL BE HANDLED QUICKLY AND EFFECTIVELY.”**

## Implosive Connections at EPCOR Substation

Area residents may have been hearing loud explosion-type noises over the past month coming from the Genesee Power Plant site. These noises are not related to the Genesee operations but rather EPCOR, working on fusing transmission lines as part of the construction of the line into the new AltaLink substation on land just north of the Genesee power station. The technique used to fuse the lines is called ‘Implosive Connection’ which means a controlled explosion is used to flash-fuse the lines together. For more information on fusing, visit: [http://www.youtube.com/watch?v=\\_qJ0395UM-M](http://www.youtube.com/watch?v=_qJ0395UM-M) or search ‘**Demonstrating Implosive Connection Devices**’ on YouTube.

## Ready to Roll

In October, McConnell Building Movers, Alberta’s own mighty movers, moved a log home from the Genesee mine area to a new location near Stony Plain. While moving buildings is an everyday occurrence for McConnell, this was an unusual move as the weight of the house is so much greater than the average house because it is made of solid wood. In addition, the width of the log home made it difficult to clear obstacles such as the Genesee Bridge. The house was moved around one a.m. on October 31 in order to avoid gravel truck traffic. The move took about three hours.



## For Sale

**Land:** Capital Power still has a number of parcels of land for sale in the Genesee area. For more information, please contact **George Greenhough, Manager Land Services at 780-969-8618** or [ggreenhough@capitalpower.com](mailto:ggreenhough@capitalpower.com).

**Coal:** If you would like to purchase coal, please contact **Lorne or Sharon Lawrence at 780-789-2117**. Coal is available for pick up on Saturday mornings by appointment only.

- “mini bulk” bags contain a minimum of one tonne of coal
- Coal is screened and pieces are approximately three inches in size and larger
- Cost: \$50 + GST per bag

## Genesee Facts



**Grazing:** There were 1635 cows and calves on pasture this year. Cattle will be returning home for the winter on Friday, October 31, 2014. If you are interested in putting cattle on pasture in 2015, please contact **Jennifer Linder at 780-969-8706.**



**One of the 2014 baby falcons who was removed from the nest temporarily to be banded.**

**Genesee Falcons:** The two falcons who return to the nest on the Genesee 3 stack each spring had a good year. This spring, four eggs were laid and all four hatched, and the four baby falcons (three males and one female) grew up at Genesee this summer. All six falcons (two adults and four babies) were quite often seen hunting around the Genesee Station this summer, providing natural control of the pigeon population. They began their long journey south for the winter just before the Thanksgiving weekend.

## EPEA Renewal and Amendment

In September this year, Capital Power published notice of the Water Licence Amendment Application. This is not a new licence, but a request to amend the expiry date on the current water licence so it aligns with the anticipated approvals expiry date for the Genesee Units 4 & 5. This will administratively streamline the process for future permit renewals for the facility. The amendment also reflects the predicted increase in evaporative water loss from the cooling pond due to Genesee Units 4 & 5.

The expected in-service date for the two new units is between 2017-2020 and construction is anticipated to start between 2015-2017.

For more information on the Genesee Units 4 & 5 Project or the Genesee Approval Renewal, please visit:

**[www.capitalpower.com](http://www.capitalpower.com)**  
or contact us directly: **780-848-8474,**  
**[publicconsultation@capitalpower.com](mailto:publicconsultation@capitalpower.com).**

## Capital Power Lands Host Alberta Agriculture Weather Station

This summer, Capital Power was approached by Alberta Agriculture with a request to set up a weather station on Genesee lands.

A site was selected north east of St. Francis and the weather monitoring equipment was installed to monitor current weather conditions in the area. The St. Francis site is one of 140 provincial sites as part of the monitoring network. The sites are automated and send the data electronically to the data collection center. The information is available to the public via Alberta Agriculture's Agro Climatic Information Service (ACIS) website. The site provides information on wind, temperature, precipitation, humidity and limited forecasting.

The St. Francis site is not yet operational but when it begins service it will provide more accurate information for Genesee-area farmers. The ACIS website can be accessed here:

**<http://agriculture.alberta.ca/acis>** and click on '**Alberta Weather Station Conditions Summary**'.



## Genesee Mine Test Blasting

Some areas in the East Field of the Genesee Mine are difficult for the dragline to dig due to the way it must be positioned. An application to conduct a series of test blasts was made to, and approved by, the Alberta Energy Regulator in early October. On October 22nd and 23rd, two test blasts were fired in the East Field of the Genesee Mine. Each pattern was small (300 metres in length and contained about 100 holes). The productivity data obtained from the dragline digging in the test areas will determine if there is a benefit to continue to blast the interburden.



**This cross-section of the mine shows coal seams #1 and #2 on the left (dark area). The rubble beside it is the layer between seam #2 and #3 that was broken apart by the blasting. The dragline will remove that material to access coal seam #3 underneath.**

Through blast design and consultation with the explosives supplier, Westmoreland did not anticipate, nor did they experience any problems due to ground vibrations. To be sure, seismographs were installed in the area to monitor ground vibrations and air pressure. Due to the distance from the blast site to residents, noise was expected to be minimal but the residents nearest to the test site (within 3 kilometers) were personally notified by Westmoreland staff in advance of the testing.

### First Aid Training

If you are a Genesee resident and in need of St. John Ambulance Standard First Aid Training, call now to reserve your spot in the next course. The course is 13-hours over a Saturday and Sunday. A maximum of 20 spots are available on a first come, first served basis.

When: April 11 & 12, 2015 from 8 a.m. to 5 p.m. each day

Where: Genesee Hall

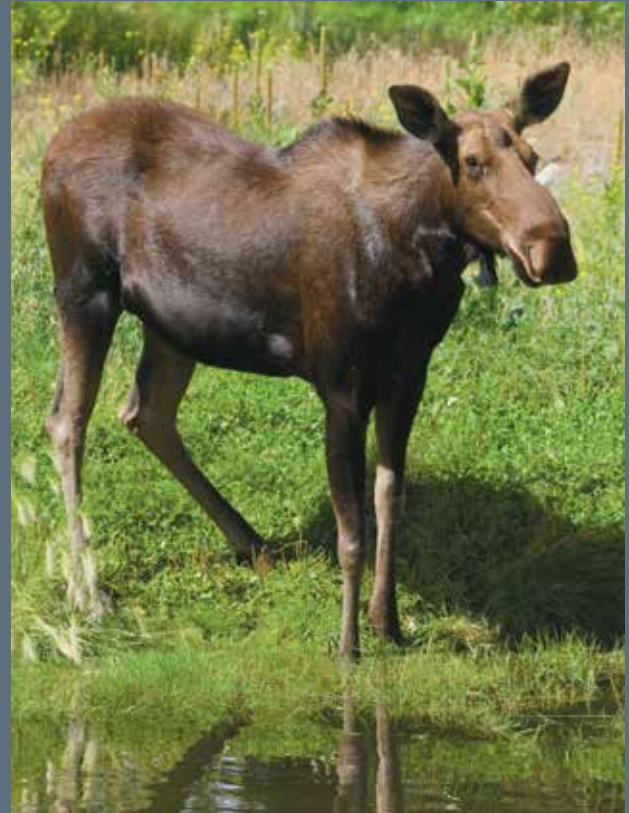
Cost: \$20 – the remainder is subsidized by Capital Power

Call Jennifer Linder to register: 780-969-8706

*\*Based on registration numbers, only one first aid training session is offered each year in the spring. If the demand increases, additional sessions may be offered.*



## Report Wildlife – Wildlife Monitoring



Capital Power continues the Wildlife Monitoring program on the main thoroughfares around the Genesee Station to determine areas that show high frequency for wildlife-vehicle collisions.

Capital Power shares this report with Leduc County and it is incorporated into the bio-monitoring program that is ongoing in the Genesee area. Reported incidents are used as a basis to improve visibility or signage in those areas considered most frequented by wildlife.

Call **780-848-8474** to report the location of any road kill sightings or accidents involving wildlife, or to report any wildlife concerns in the Genesee area.

## What is Important to You?

Have an idea for the *Genesee Connection Newsletter*? Contact Community Consultation and help us continue to provide information that is of interest to you.

## How We Connect with Our Neighbours

Capital Power understands the importance of being accessible to our neighbours. Here are some of the ways we engage in the community:

- Annual Genesee Mine Tour and BBQ
- Genesee Power Plant Tours
- Genesee Connection Newsletter
- CATG
- Project Open Houses
- Sponsorship and support of community initiatives
- Land Management Office located outside Genesee gates for easy public access

## CATG – New Members Needed

The Capital Power Community Advisory Task Group (CATG) helps the company better understand the interests and priorities of our neighbours, and provides an opportunity for area residents to meet with Capital Power and Genesee Mine representatives.

New members are needed for the next two-year term starting March 2015. There are three evening meetings per year. If you think you might be interested or would like more information on the requirements, please contact Brenda Walton, the group facilitator, at Kairos Creative Solutions by calling **780-957-3330**, or by writing to **Brenda@kairoscreativesolutions.com / Box 28, Crooked Creek, AB T0H 0Y0**.

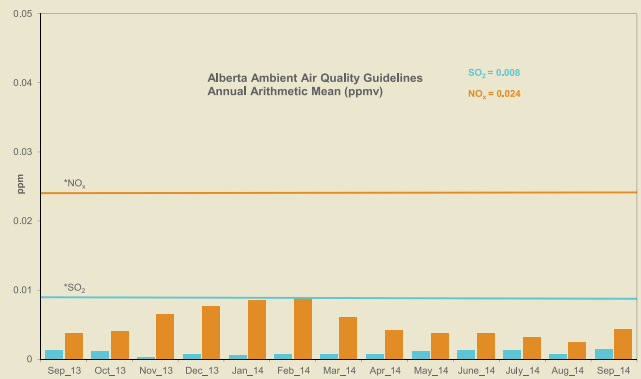
## Genesee Station Environmental Performance

The following graphs show the most recent environmental performance results:

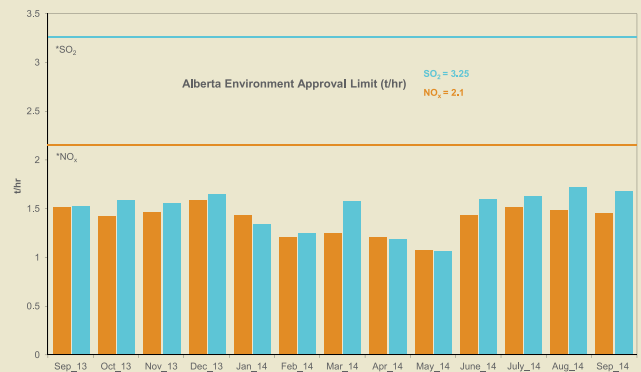
- Ambient air quality as measured by the Genesee ambient air monitoring trailer;
- Stack emissions for stack one (for generating units 1 and 2);
- Stack emissions for stack two (for generating unit 3).

Measurements are compared to guidelines and approval limits set by Alberta Environment. Genesee continues to operate below maximum levels set for ambient air quality and stack approval limits.

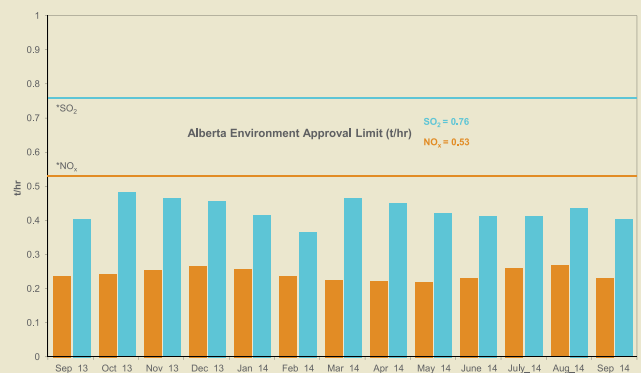
### AMBIENT EMISSION LEVELS



### G1/2 EMISSION LEVELS



### G3 EMISSION LEVELS



**\*Sulphur Dioxide (SO<sub>2</sub>):** a strong smelling, colourless gas that is formed by the combustion of fossil fuels. In high concentrations, SO<sub>2</sub> is known to be harmful to vegetation and human health. SO<sub>2</sub> is soluble in water and excessive levels can lead to sulfuric acid deposition or acid rain.

**Nitrogen Oxides (NO<sub>x</sub>):** the term used to describe NO (nitrogen oxide), NO<sub>2</sub> (nitrogen dioxide) and other nitrogen oxides. The major sources of man-made NO<sub>x</sub> are high-temperature combustion processes, such as those occurring in automobiles and power plants. When concentration is high, NO<sub>x</sub> is of concern because it contributes to ground-level ozone or smog. Genesee 3 approval limits are based on a 720 hour rolling average.

**Note:** All results are converted to reference standard conditions so as to be comparable to other coal fired plants in Alberta and elsewhere, and are dry concentrations corrected to 50% excess air; ppm: parts per million. An example of the quantity of Sulphur Dioxide and Nitrogen Oxides measured at ambient air sites in parts per million would be equal to approximately 1/100th of a grain of salt per breath of air. G3 has separate approval limits from G1 and G2 for its stack emissions. G3 approval limits are in terms of a mass emission rate (i.e. tonnes per hour). To be consistent for all units, we have shown G1 and G2 emissions and limits in tonnes /hour as well.

12TH FLOOR EPCOR TOWER  
1200 – 10423 101 STREET NW  
EDMONTON, AB T5H 0E9



## GENESEE CONTACT INFORMATION

If you have questions or comments about our operations, community engagement or our land management practices, please feel free to contact us.

Generating Station Reception  
**780-848-8300**

Community Consultation  
**780-848-8474**  
**PublicConsultation@capitalpower.com**

Manager, Land Services  
George Greenhough **780-969-8618**

Genesee Guardhouse  
(24-hour Security)  
**780-969-8505**

Capital Power Website  
**www.capitalpower.com**



## Careers

For more information on starting a career with Capital Power and to view current job opportunities, visit our website at **www.capitalpower.com/careers**. Capital Power is an equal opportunity employer.

**Get this newsletter by email:** If you prefer to receive your copy of the Genesee Connection by email instead of hard copy, or if you no longer wish to receive this newsletter, please contact us at 'Community Consultation' (above) and we will remove you from our mailing list.

Capital Power respects your right to privacy. Any personal information Capital Power collects about you, including your name, address, phone number and email address, will only be used to contact you for the purposes of the consultation process. For further information, please see Capital Power's Privacy Policy at **www.capitalpower.com**.