

APRIL 2013 CONNECTION

Dear Friends and Neighbours!

Even with the slow start to spring, planning for community events are well under way. Genesee Station and Mine are happy to once again host the annual Genesee Mine Research Field Day on June 27, 2013. Please read on for details on how you can register for this popular community event.

Keep your eyes to the sky for the return of the peregrine falcons. Capital Power's website will again host the Falcon Cam, this year streaming in HD. Go to <http://www.capitalpower.com/Pages/default.aspx> to watch. Capital Power employee George Greenhough and falcons were made famous when they appeared in a March episode of the CBC2 television show "Let's Go Outdoors." To catch this episode visit urlm.in/rejx.

Genesee Station employees are often involved in charitable activities, and this year, they donated their older work boots for Edmonton's Hope Mission. The boots will be distributed to Albertans in need.



Sean Furey.

Safety continues to be a number one priority for Capital Power. We encourage motorists who witness unsafe or aggressive driving behaviour in the area to report license plate numbers and vehicle descriptions to the local RCMP; also contact Capital Power's Community Consultation line **780-848-8474** so license plate numbers can be verified on site.

SEAN FUREY, Plant Manager
Genesee Generating Station, Capital Power

GENESEEE STATION

BOX 20, SITE 2, RR #1
WARBURG, ALBERTA T0C 2T0 CANADA

4th Annual Genesee Mine Research Field Day



The public and local area residents are invited to participate in a guided tour of the various research projects currently under way on land within the Genesee Mine on Thursday, June 27.

If interested, please register before Wednesday, June 17 by calling Capital Power's Community Outreach at **780-848-8474** or Lee Simants at **780-720-2019**.

5:00 p.m. to 6:30 p.m. – BBQ supper at Genesee Community Hall

6:30 p.m. – Buses depart Genesee Community Hall for tour of Genesee Mine

Capital Power and Sherritt Coal representatives as well as researchers will be on hand to present information and answer questions. Come wearing appropriate footwear and clothing suitable for the weather conditions. Children accompanied by an adult are welcome.

GENESEE MINE RECLAMATION SUMMARY FOR 2012

Category	Land Area	(ha) % of Total
Fully Reclaimed	763	28.7%
Reclamation in Progress	264	10.0%
Required for Safe & Efficient Mining	1,629	61.3%
Total	2,657	100.0%

New Home For A Retired Genesee Mine Haul Truck



One of Genesee Mine's retired haul trucks has found a new home at the Genesee Look-out. The truck was moved to the look-out in late February.

"This was a joint project between Genesee Mine and Genesee Station," said Jennifer Linder, Project Coordinator. "Moving the retired haul truck to the Genesee Look-out allows the public opportunity to see the size of the equipment operating in Genesee Mine."

For safety reasons, we ask all Genesee Look-out visitors to respect the signage that is in place to protect the visitors and equipment.

Wildlife

Falcons – 2012 Stats



The 2012 falcon season at Genesee Station proved to be a very interesting one for those watching the live falcon camera.

Between April 29 and May 7 four eggs were laid, and all four eggs hatched between June 8 and 11. On June 20 falcon researcher Gordon Court visited the falcon box and

the decision was made to remove the two smallest chicks as they were not getting enough to eat and both had mites. The two chicks were moved to a raptor sanctuary where they were reared until they were old enough to be released as part of the Capital Power Falcon Release Program.

The two chicks that remained in the box were banded and assessed on June 28, 2012; both chicks were plump and healthy. By July 17 both chicks had fledged and did not return to the nest. They were spotted on July 21 with two adults. The chicks were flying, diving, soaring, playing tag and going after pigeons.

"Capital Power is happy to support the falcons at Genesee," said George Greenhough, Land Manager. "This year we are pleased to present a live stream HD video of the nesting box on the CPC website where you can watch the falcons 24hrs a day."

Go to www.capitalpower.com and look for the link on the home page.

In Your Community

Warburg Canada Day Event

Saturday, June 22, 2013

10 a.m. to 3 p.m.

Village of Warburg

Keeping its yearly tradition going, the Village of Warburg will host a variety of activities to celebrate Canada Day. The event will include a pancake breakfast at the community hall, a variety of games and activities, such as an inflatable bouncer, face painting and musical entertainment, a parade, a demo derby and fireworks!

For more information, please contact Marj Savage at **780-848-2828**.

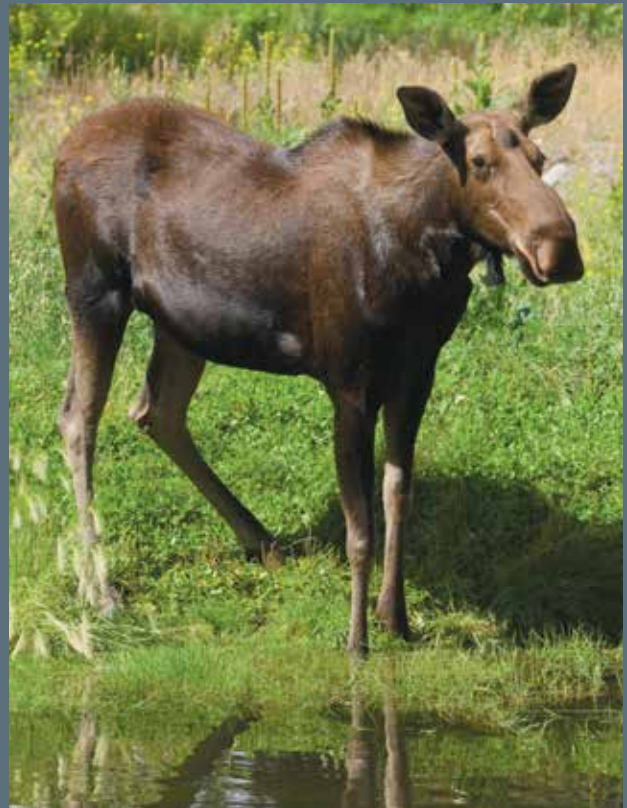


Warburg Canada Day 2011.



Warburg Canada Day 2012.

Report Wildlife – Wildlife Monitoring



Capital Power continues the Wildlife Monitoring program on the main thoroughfares around the Genesee Station to determine areas that show high frequency for wildlife-vehicle collisions.

Capital Power shares this report with Leduc County and it is incorporated into the bio-monitoring program that is ongoing in the Genesee area. Reported incidents are used as a basis to improve visibility or signage in those areas considered most frequented by wildlife.

Call **780-848-8474** to report the location of any road kill sightings or accidents involving wildlife, or to report any wildlife concerns in the Genesee area.

What Is Important to You?

The *Genesee Station Connection* newsletter is written for members of the Genesee community. We think it's important for our neighbours to have the opportunity to learn and ask questions about our operations and our activity in the community.

Topics are chosen that we think would be of interest to our readers, but as this is a newsletter for neighbours, we want to know what *you* would like to read about.

Help us continue to improve the newsletter by telling us what kind of information you would be interested to learn more about. Comments and suggestions can be made by contacting the Community Outreach Team (contact information on back page).

All You Want in a Career

Are you, or is someone you know, interested in working at Capital Power?

We provide careers that offer professional growth, new challenges, recognition and long-term satisfaction.

For more information on starting a career with Capital Power and to view current job opportunities, visit our website at www.capitalpower.com/careers. Capital Power is an equal opportunity employer.

Sherritt Coal wants you to start now, grow professionally and emerge as a leader in the coal mining industry, where there are opportunities in a number of work areas. For more information about Sherritt's Coal business, or to view all current job opportunities, visit www.sherritt.com.

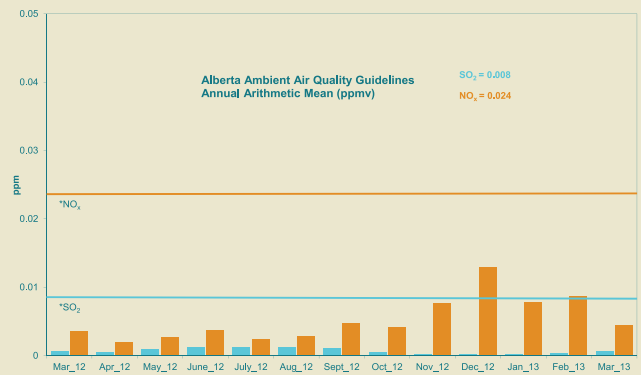
Genesee Station Environmental Performance

The following graphs show the most recent environmental performance results:

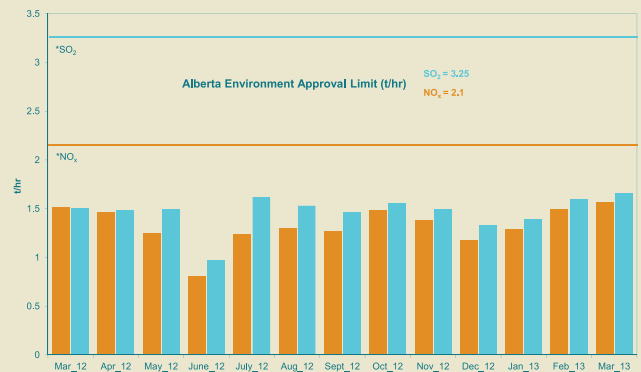
- Ambient air quality as measured by the Genesee ambient air monitoring trailer;
- Stack emissions for stack one (for generating units 1 and 2);
- Stack emissions for stack two (for generating unit 3).

Measurements are compared to guidelines and approval limits set by Alberta Environment. Genesee continues to operate below maximum levels set for ambient air quality and stack approval limits.

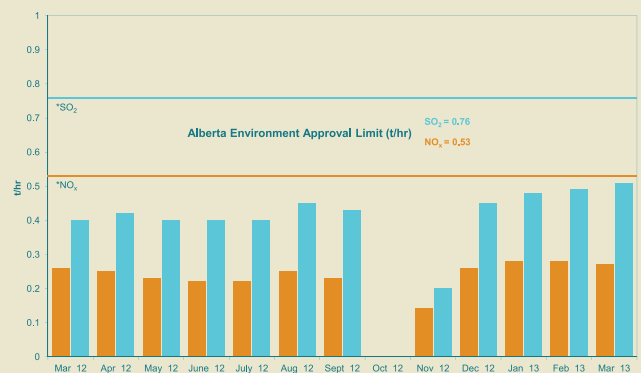
AMBIENT EMISSION LEVELS



G1/2 EMISSION LEVELS



G3 EMISSION LEVELS



**Sulphur Dioxide (SO₂): a strong smelling, colourless gas that is formed by the combustion of fossil fuels. In high concentrations, SO₂ is known to be harmful to vegetation and human health. SO₂ is soluble in water and excessive levels can lead to sulfuric acid deposition or acid rain.*

Nitrogen Oxides (NO_x): the term used to describe NO (nitrogen oxide), NO₂ (nitrogen dioxide) and other nitrogen oxides. The major sources of man-made NO_x are high-temperature combustion processes, such as those occurring in automobiles and power plants. When concentration is high, NO_x is of concern because it contributes to ground-level ozone or smog. Genesee 3 approval limits are based on a 720 hour rolling average.

Note: All results are converted to reference standard conditions so as to be comparable to other coal fired plants in Alberta and elsewhere, and are dry concentrations corrected to 50% excess air; ppm: parts per million. An example of the quantity of Sulfur Dioxide and Nitrogen Oxides measured at ambient air sites in parts per million would be equal to approximately 1/100th of a grain of salt per breath of air. G3 has separate approval limits from G1 and G2 for its stack emissions. G3 has separate approval limits in terms of a mass emission rate (i.e. tonnes per hour). To be consistent for all units, we have shown G1 and G2 emissions and limits in tonnes /hour as well.

12TH FLOOR EPCOR TOWER
1200 – 10423 101 STREET NW
EDMONTON, AB T5H 0E9



GENESEEE CONTACT INFORMATION

Below are some contact numbers if you have questions or comments about our operations, community outreach or our land management practices:

Generating Station Reception
780-848-8300

Community Consultation,
Lee Simants **780-848-8474**
PublicConsultation@capitalpower.com

Manager, Environment & Land Services
George Greenhough **780-969-8618**

Genesee Guardhouse
(24-hour Security)
780-969-8505

Capital Power Website
www.capitalpower.com



We are proud community members and appreciate receiving feedback from our neighbours about how we can improve our business practices, communication and our outreach.

To help us keep our records up to date and ensure you continue to receive this newsletter, please contact Capital Power Genesee Community Consultation if you are moving, your contact information changes, or if you prefer we do not store or use your personal information.

Capital Power respects your right to privacy. Any personal information Capital Power collects about you, including your name, address, phone number and email address, will only be used to contact you for the purposes of the consultation process. For further information, please see Capital Power's Privacy Policy at **www.capitalpower.com**.