


# ACTIONS SPEAK VOLUMES...



At Capital Power, our values are evident in everything we do. We believe that consistently living our values brings us closer to our corporate vision of being recognized as one of North America's most **respected, reliable, and competitive** power producers.

**BRIAN VAASJO** President and CEO

Read our new A+ Corporate Responsibility Report at [www.capitalpower.com](http://www.capitalpower.com) 

**SOLID FOUNDATION. GROWING COMPANY. CLEAR FUTURE.**

BEST  
**50**  
Corporate Knights • 2011  
CORPORATE CITIZENS



## **our values**

We are passionate about  
our business and safety

We act with integrity

We work together

We are accountable

We create and enhance  
shareholder value





**CAPITAL POWER** (TSX:CPX) is a growth-oriented North American power producer that develops, acquires, and operates power generation from a diverse range of energy sources. An experienced power producer with one of the youngest fleets on the continent, we aim to grow our capacity to **10,000 megawatts by 2020**, through steady, disciplined growth.

## OUR VALUES IN ACTION

### CAPITAL POWER:



**contributed nearly \$1 million** to community causes in 2010



**planted 110,000 Spruce, Aspen, and Willow seedlings** as part of our innovative land reclamation program at the Genesee Generating Station in Alberta



**committed approximately \$2 billion to wind power projects** in B.C., Alberta, and Ontario in 2010 and 2011



achieved an average of 90% operating availability in 2010, thanks to a **well-maintained fleet and a team of skilled plant operators**



delivered on our promise of transparency, releasing our second **A+ rated corporate responsibility report** in September 2011

## SAFETY IN ACTION

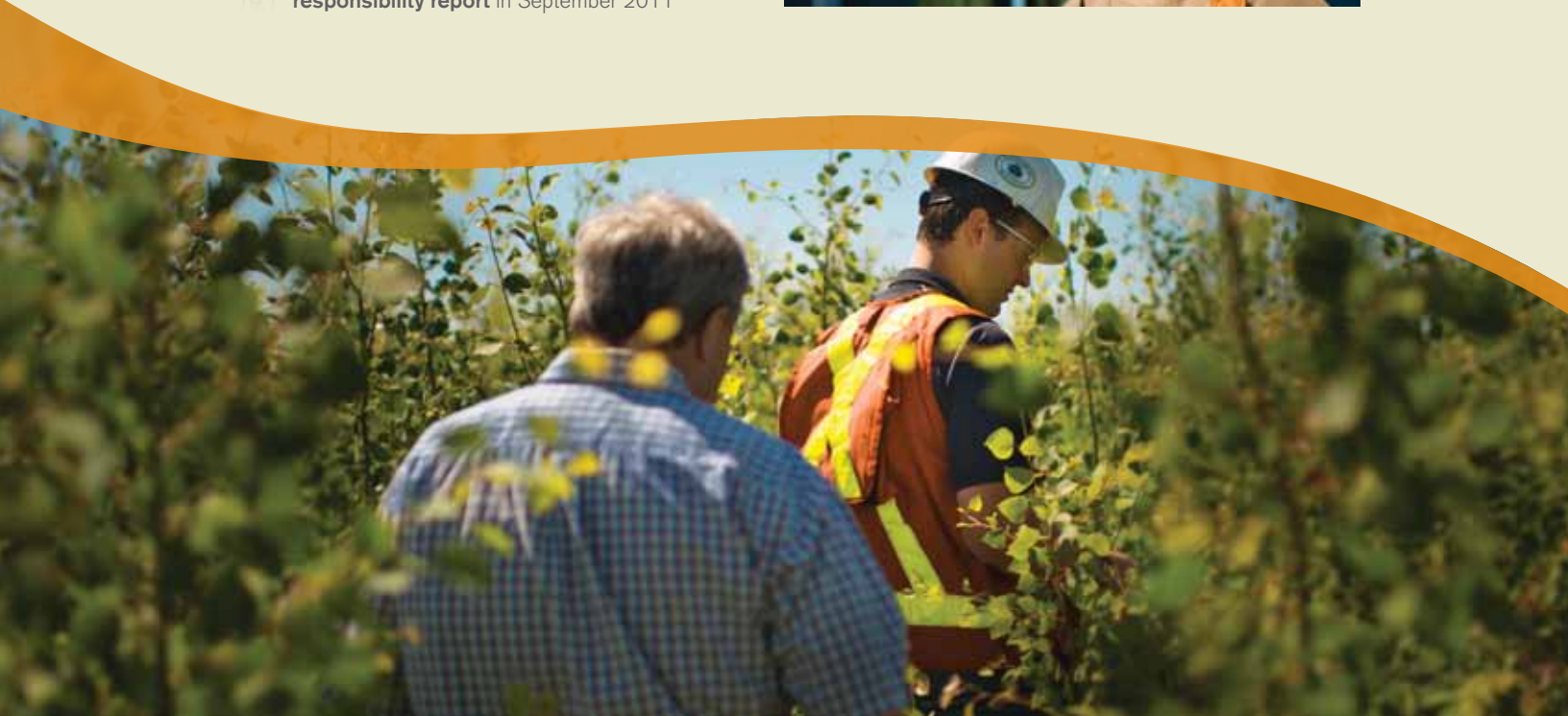
We are working toward a safety culture of zero incidents, where safety is a way of life for all employees – not just at work but in everyday living.



The Nipigon Power Plant **achieved 500,000 person hours** without a lost-time injury.



The North Bay and Kapuskasing Power Plants have achieved **15 years without lost-time injuries**.





# PROTECTING THE ENVIRONMENT

We keep our facilities well-maintained and use the best commercially available technology. We were among the first in North America to use supercritical combustion technology to produce coal-fired power with lower emissions.

## INNOVATIVE RECLAMATION



### **Our award-winning land reclamation continues to yield excellent results.**

Approximately 950 cow-calf pairs graze on reclaimed land at the Genesee facility, and we're working with the University of Alberta to research ways of turning previously mined land into forested areas.



## MONITORING BIODIVERSITY

At the Genesee Generating Station in Alberta, a special monitoring program studies potential long term effects of local power plants on land, air, water and wildlife. **We monitor the nesting and migration of peregrine falcons,** the habitats of deer and moose, and the over-wintering of migratory birds, raptors and owls, songbirds and amphibians. No adverse impacts on air, water, wildlife, and habitat have been found to date.



## NEXT GENERATION TECHNOLOGIES

### **Capital Power supports a new \$21 million teaching and research centre at the University of Alberta's Faculty of Engineering.**

The Canadian Centre for Clean Coal/Carbon and Mineral Processing Technologies is educating the next generation of clean energy engineers and cultivating new technologies to process minerals, produce clean coal, and reduce greenhouse gas emissions.



Since its commissioning in 2006, our Kingsbridge I facility has twice been Ontario's best performing wind farm as measured by annual capacity factor.





1,047  
EMPLOYEES

Working together in cities and towns across North America, our employees are the strength behind our performance.



## INVESTING IN THE COMMUNITY

Capital Power contributes to healthy, sustainable communities through corporate donations and partnerships, active participation in United Way, and support for employee volunteerism. Employees who volunteer at least 35 hours can direct a \$500 corporate donation to the charity of their choice. Other community initiatives in 2010 included:

### GREY CUP FESTIVAL – THE CAPITAL POWERED ZIPLINE

Capital Power matched 100% of the funds raised by enthusiastic riders to support the **Edmonton Garrison Military Family Resource Centre**.



### ALBERTA SHOCK TRAUMA AIR RESCUE SERVICE FOUNDATION (STARS)

A three-year agreement to support **STARS Critical Care & Transport Medicine Academy**, which covers the fundamentals of critical-care transport medicine.

### UNITED WAY CAMPAIGN

Our employee-based campaigns were recognized in the **Edmonton and Chicago areas** for outstanding results.

### CAPITAL POWERED ART

A three-year partnership with the **Art Gallery of Alberta**, bringing ten national and international exhibitions to Edmonton from the National Gallery of Canada.



8,500

EMPLOYEE VOLUNTEER HOURS IN 2010



### LISTENING TO AND LEARNING FROM STAKEHOLDERS

Capital Power develops and operates power plants from a diverse range of fuel sources in communities across North America.

At every stage of a facility's life-cycle – from development, through operation, to decommissioning – we draw on best practices in public consultation to ensure that critical infrastructure is permitted, built and operated in a way that aligns with the interests and priorities of the community.

### FOR MORE INFORMATION

Capital Power Corporation  
External & Investor Relations  
780.392.5100  
info@capitalpower.com  
capitalpower.com

www.



Organizations that help the women and men who serve our country, and their families, received approximately \$80,000 from Capital Power in 2010/2011 thanks to the fund-raising efforts of our employees and donations matched by Capital Power.

